

SHIP-FUELER «PILDNE S-160»

1. FUNCTION & TYPE OF SHIP

- 1.1. The Tanker-dispender assigned for transportation and dispensation of benzine and diesel-fuel oil for berth connected ships and operational bunkering fleet by diesel-fuel oil.
- 1.2. Steel ship with one-deck and twin propellers; with six cargo tanks, double bottom, inturned welts; with longitudinal bulkhead in cargo tanks zones; with engine room and twin-decks superstructure in stern zone of ship and pump room in bow zone; with six athwart bulkheads and with maneuvering propulsion device in bow of ship.

2. CLASS OF SHIP

According to RMRS: **KM Ice 1 R3-RSN AUT3 Oil Tanker (ESP)**

According to Lloyd's Register of Shipping: **+100 A1 Ice Class 1D Specified coastal service UMS Oil Tanker ESP +LMC**

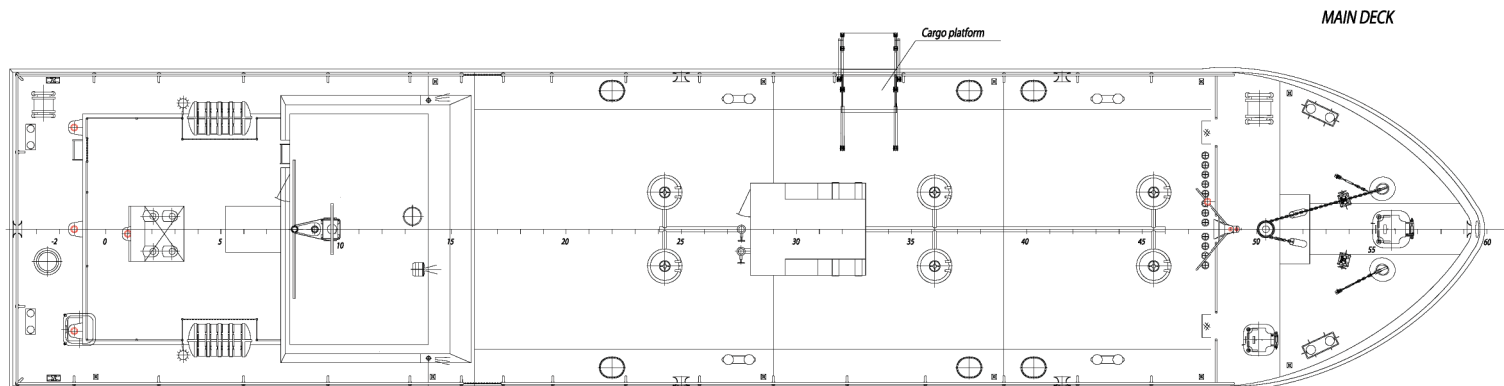
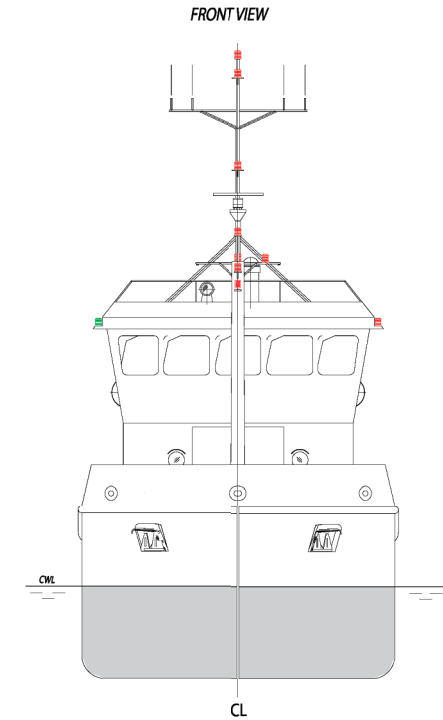
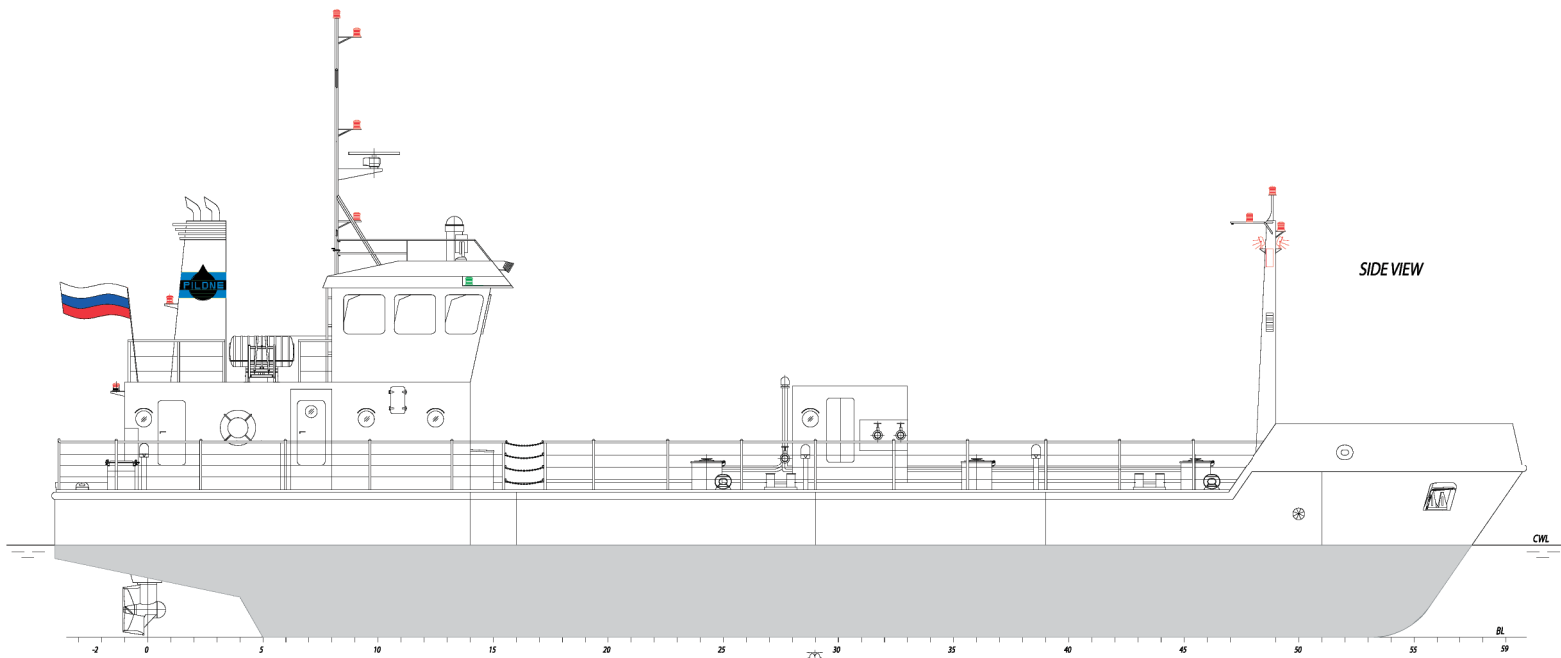
3. GENERAL ARRAGEMENT

3.1. Dimensions & Capability

L, m	32,8
B, m	6,8
D, m	3,15
d (cargo mark)	2,00
(sea water $\gamma=1,025 \text{ т/м}^3$)	
Burden, t	160
Power of propulsion engine, kWt	2 x 235
Speed, knots	10
Crew	3
Δ empty, t	200
Total shipping, t	200

3.2. Area of operation

Inland waters of Russian Federation and sea with limitation of navigation according to RMRS R3-RSN.
Persian Gulf (Arabian Sea), Black Sea, Red Sea & Mediterranean Sea.



GENERAL PROPERTIES

Overall length, m	ab. 32
Overall breadth, m	ab. 6,8
Height of board min, m	ab. 3,15
Draft at loading mark, m	not more then 2,00
Engines power, kWt	2x235
Crew, m.	3
Frame	500

Symbol of class RMRS

KM  11 R3-B5N AUT3 Oil tanker (ESP)

Symbol of class LRS

+100A1 Ice Class 1D Specified coastal service UMS Oil tanker ESP+LMC