

SHIP-FUELER «PILDNE S-250»

1. FUNCTION & TYPE OF SHIP

- 1.1. The Tanker-dispender assigned for transportation and dispensation of benzine and diesel-fuel oil for berth connected ships and operational bunkering fleet by diesel-fuel oil.
- 1.2. Steel ship with one-deck and twin propellers; with six cargo tanks, double bottom, inturned welts; with longitudinal bulkhead in cargo tanks zones; with engine room and twin-decks superstructure in stern zone of ship and pump room in bow zone; with six athwart bulkheads and with maneuvering propulsion device in bow of ship.

2. CLASS OF SHIP

According to RMRS: **KM Ice1 R3-RSN AUT3 Oil Tanker (ESP)**

According to Lloyd's Register of Shipping: **+100 A1 Ice Class 1D Specified coastal service UMS Oil Tanker ESP +LMC**

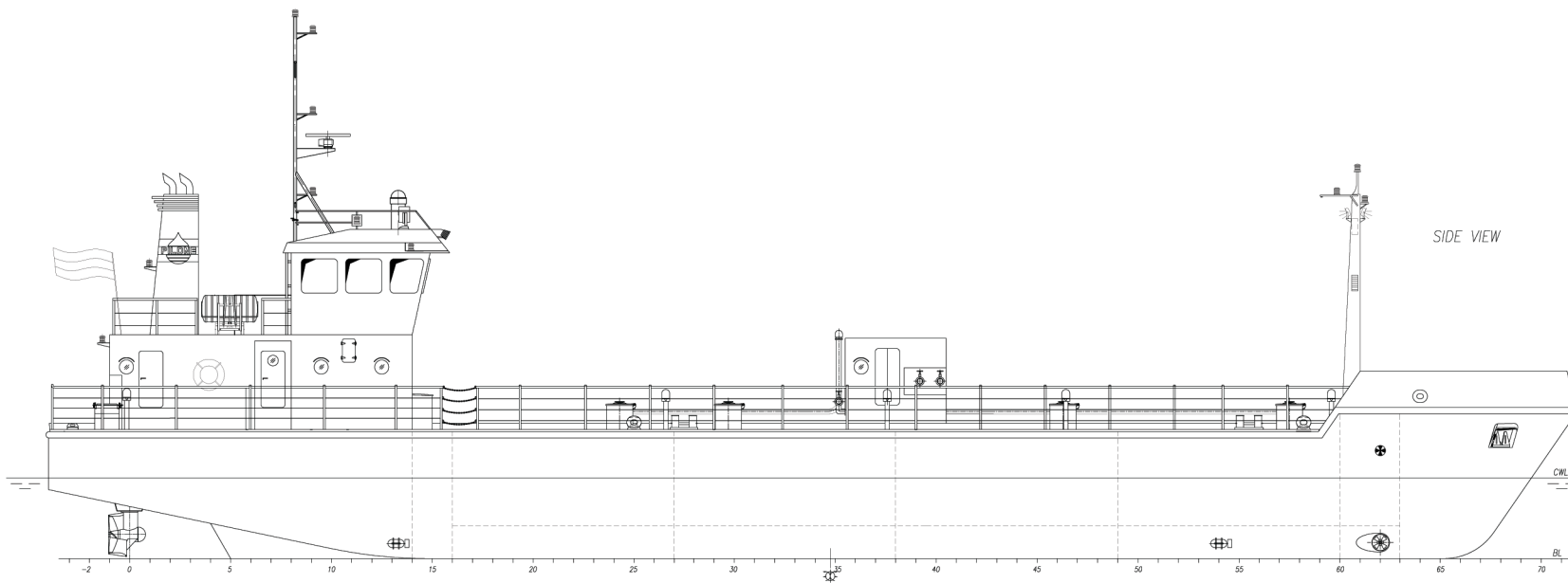
3. GENERAL ARRAGEMENT

3.1. Dimensions & Capability

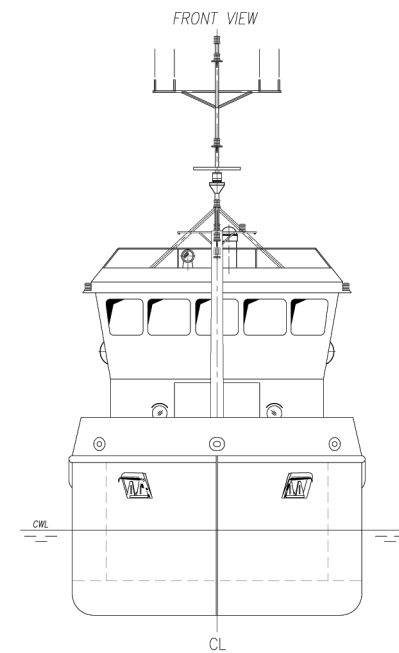
L, m	39,0
B, m	6,8
D, m	3,15
d (cargo mark)	2,0
(sea water $\gamma=1,025 \text{ t/m}^3$)	
Burden, t	250
Power of propulsion engine, kWt	2 x 235
Speed, knots	9
Crew	3
Δ empty, t	236
Total shipping, t	260

3.2. Area of operation

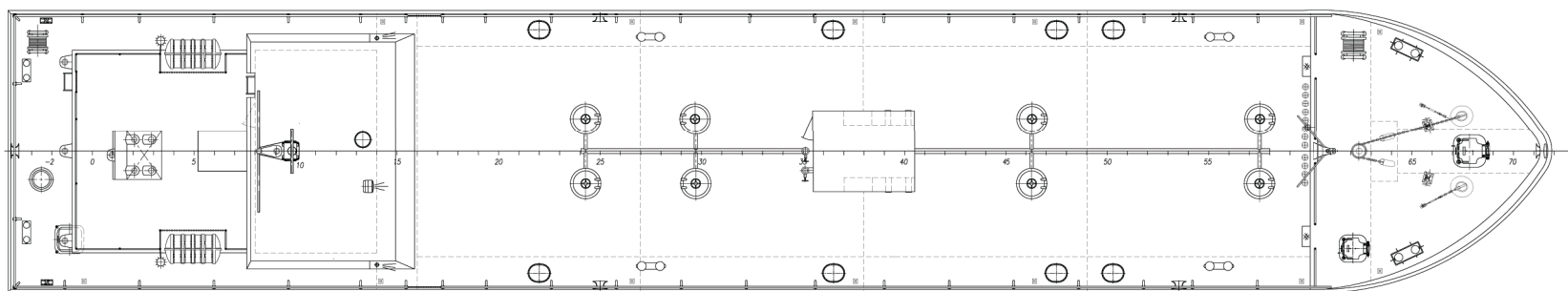
Inland waters of Russian Federation and sea with limitation of navigation according to RMRS R3-RSN.
Persian Gulf (Arabian Sea), Black Sea, Red Sea & Mediterranean Sea.



SIDE VIEW



FRONT VIEW




MAIN DECK

GENERAL PROPERTIES

Overall length, m	ab. 38
Overall breadth, m	ab. 6,8
Height of board min, m	ab. 3,15
Draft at loading mark, m	not more than 2,00
Engines power, kWt	2x235
Crew, m.	3
Frame	500

Symbol of class RMRS

KM  R3-RSN AUT3 Oil tanker (ESP)

Symbol of class LRS

+100A1 Ice Class 1D Specified coastal service UMS Double Hull Oil tanker ESP+LMC